

# Population health snapshot

## DEMOGRAPHICS



# 25,869

people living in this area



0–14 years  
**5,528**

15–64 years  
**16,631**

65 years +  
**3,710**

65 years +  
**14%**

145 people identify as Aboriginal and Torres Strait Islander

## FACTORS WHICH IMPACT ON HEALTH



# 94.5%

dwellings with at least one motor vehicle



# 82.1%

dwellings with internet connection



# 2.9%

unemployment rate



# 9.6%

dwellings have an income less than \$400 per week

## ACCESS TO SERVICES



# 73.8

General Practitioners  
(SA3 Surf Coast-Bellarine Peninsula)



# 10

General Practices



# 2

Public Hospitals\*



# 0

Private Hospitals

0 Bush Nursing Hospitals | 0 Independent Community Health Services | 0 Bush Nursing Centres  
0 Aboriginal Community-Controlled Health Organisations (ACCHOs)

\*Public hospitals are counted as the number of hospital locations with acute beds

SA3: Statistical Area 3 (Western Victoria PHN is divided into nine SA3s)



## HOSPITALISATIONS

# 26

Potentially preventable hospitalisations per 1,000 people (age standardised)

# 14

Potentially preventable hospitalisations for chronic conditions per 1,000 people (age standardised)

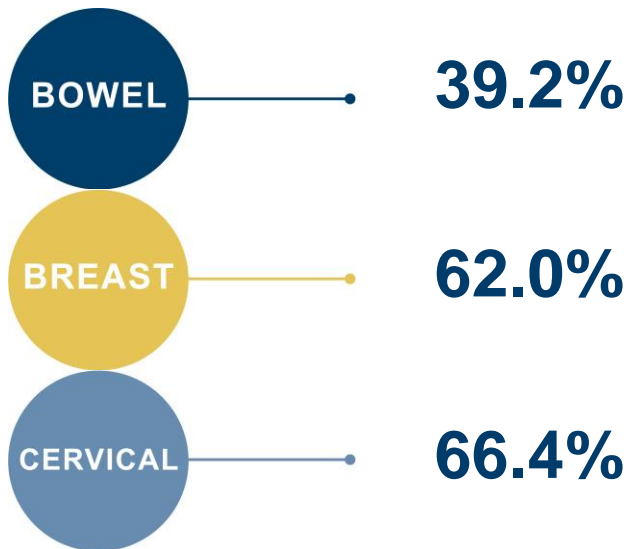
# 158

Emergency department presentations per 1,000 people

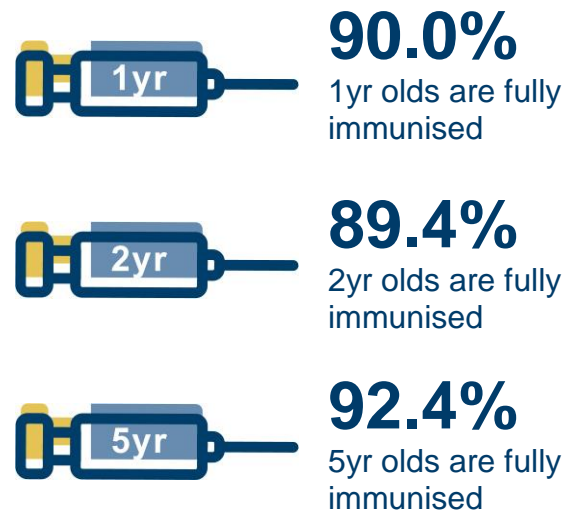
# 206

Hospital separations per 1,000 people

### CANCER SCREENING RATES



### IMMUNISATIONS



### HEALTH RISK FACTORS 18 YEARS AND OVER



14.1%  
current smokers



8.8%  
complying with fruit and vegetable consumption guidelines



69.8%  
met 1999 National physical activity guidelines for adults



28.5%  
are overweight



12.5%  
are obese

### MENTAL HEALTH



9.3

18yrs and over with high or very high psychological distress per 100 people (age standardised)



18.5

percent of people with a lifetime prevalence of depression and anxiety



8.2

deaths from suicide and self-inflicted injuries per 100,000 people (age standardised)

### CHRONIC DISEASE



2.8%

of persons 18 years and over with type 2 diabetes



15.2%

circulatory system disease (age standardised)

### SOURCES

ABS Census, 2011 | Aust. Government Department of Employment, 2015 | AIHW, 2014 | Service Mapping from multiple sources e.g. Department of Health, National Health Services Directory, & VACCHO | Compiled by PHIDU based on modelled estimates from 2011-13 Australian Health Survey, ABS (unpublished); & the average of ABS Estimated Resident Population, 30 June 2011 & 30 June 2012, based on Aust. standard | Compiled by PHIDU from deaths data based on 2009-13 Cause of Death Unit Record Files supplied by Aust. Coordinating Registry and Victorian Department of Justice, on behalf of Registries of Births, Deaths & Marriages & National Coroner Information System. The population at the small area level (Statistical Area Level 2) is ABS Estimated Resident Population (ERP), 30 June 2009 to 30 June 2013; population standard is ABS ERP for Aust., 30 June 2009 to 30 June 2013 | Compiled by PHIDU based on data from: 1) BreastScreen NSW, BreastScreen Vic, BreastScreen Qld, BreastScreen SA, BreastScreen WA 2010 & 2011; & BreastScreen ACT 2007 & 2008; & 2) average of ABS ERP, 30 June 2010 & 30 June 2011 (NSW, Vic, Qld, SA & WA); 30 June 2007 & 30 June 2008 (ACT) | Victorian Cervical Cytology Registry Statistical Report, 2014 | Aust. Government Department of Health. ACIR. Jan-March 2016 | Victorian Population Health Survey, 2011-12 | Victorian Population Health Survey, 2011-12. Analysis based on 2003 fruit & vegetable consumption guidelines which have since changed | Victorian Health Information Surveillance System Ambulatory Care Sensitive Conditions reports, 2013-14. Data unavailable for Horsham | Polar Explorer - Victorian Admitted Episodes Dataset, 2014/15