

Golden Plains

Shire Council

www.westvicphn.com.au
info@westvicphn.com.au

phn
WESTERN VICTORIA

An Australian Government Initiative

Population health snapshot

DEMOGRAPHICS



18,770

people living in this area



0–14 years
4,342

15–64 years
12,411

65 years +
2,017

65 years +
11%

130 people identify as Aboriginal and Torres Strait Islander

FACTORS WHICH IMPACT ON HEALTH



96.2%

dwellings with at least one motor vehicle



80.4%

dwellings with internet connection



3.4%

unemployment rate



9.4%

dwellings have an income less than \$400 per week

ACCESS TO SERVICES



11.6

General Practitioners (SA3 Barwon West)



4

General Practices



0

Public Hospitals*



0

Private Hospitals

0 Bush Nursing Hospitals | 0 Independent Community Health Services | 0 Bush Nursing Centres

0 Aboriginal Community-Controlled Health Organisations (ACCHOs)

*Public hospitals are counted as the number of hospital locations with acute beds

SA3: Statistical Area 3 (Western Victoria PHN is divided into nine SA3s)

HOSPITALISATIONS

34

Potentially preventable hospitalisations per 1,000 people (age standardised)

22

Potentially preventable hospitalisations for chronic conditions per 1,000 people (age standardised)

284

Emergency department presentations per 1,000 people

256

Hospital separations per 1,000 people

BALLARAT 5331 6303

GEELONG 5222 0800

HORSHAM 5381 1756

WARRNAMBOOL 5564 5888

Golden Plains

Shire Council

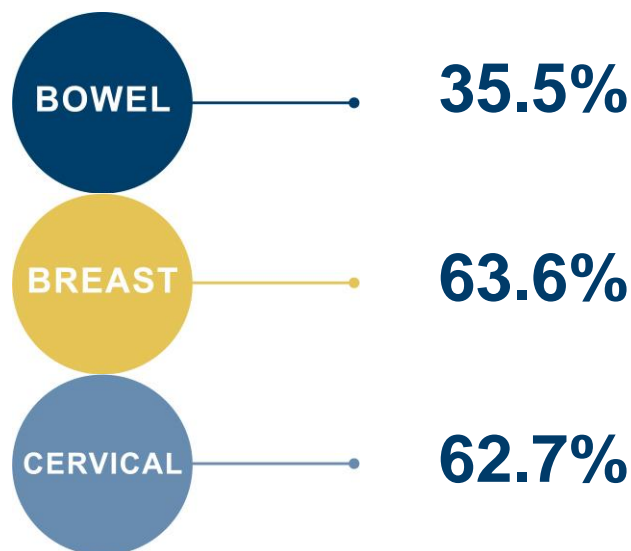
www.westvicphn.com.au
info@westvicphn.com.au

phn
WESTERN VICTORIA

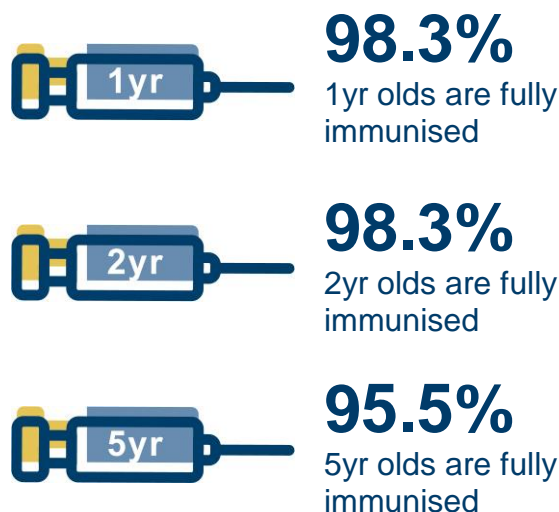
An Australian Government Initiative

Population health snapshot

CANCER SCREENING RATES



IMMUNISATIONS



HEALTH RISK FACTORS 18 YEARS AND OVER



13.4%

current smokers



5.8%

complying with fruit and vegetable consumption guidelines



69.8%

met 1999 National physical activity guidelines for adults



35.1%

are overweight



16.2%

are obese

MENTAL HEALTH



10.4

18yrs and over with high or very high psychological distress per 100 people (age standardised)



21.0

percent of people with a lifetime prevalence of depression and anxiety



14.7

deaths from suicide and self-inflicted injuries per 100,000 people (age standardised)

CHRONIC DISEASE



4.1%

of persons 18 years and over with type 2 diabetes



16.5%

circulatory system disease (age standardised)

SOURCES

ABS Census, 2011 | Aust. Government Department of Employment, 2015 | AIHW, 2014 | Service Mapping from multiple sources e.g. Department of Health, National Health Services Directory, & VACCCHO | Compiled by PHIDU based on modelled estimates from 2011-13 Australian Health Survey, ABS (unpublished); & the average of ABS Estimated Resident Population, 30 June 2011 & 30 June 2012, based on Aust. standard | Compiled by PHIDU from deaths data based on 2009-13 Cause of Death Unit Record Files supplied by Aust. Coordinating Registry and Victorian Department of Justice, on behalf of Registries of Births, Deaths & Marriages & National Coronial Information System. The population at the small area level (Statistical Area Level 2) is ABS Estimated Resident Population (ERP), 30 June 2009 to 30 June 2013; population standard is ABS ERP for Aust., 30 June 2009 to 30 June 2013 | Compiled by PHIDU based on data from: 1) BreastScreen NSW, BreastScreen Vic, BreastScreen Qld, BreastScreen SA, BreastScreen WA 2010 & 2011; & BreastScreen ACT 2007 & 2008; & 2) average of ABS ERP, 30 June 2010 & 30 June 2011 (NSW, Vic, Qld, SA & WA); 30 June 2007 & 30 June 2008 (ACT) | Victorian Cervical Cytology Registry Statistical Report, 2014 | Aust. Government Department of Health. ACIR. Jan-March 2016 | Victorian Population Health Survey, 2011-12 | Victorian Population Health Survey, 2011-12. Analysis based on 2003 fruit & vegetable consumption guidelines which have since changed | Victorian Health Information Surveillance System Ambulatory Care Sensitive Conditions reports, 2013-14. Data unavailable for Horsham | Polar Explorer - Victorian Admitted Episodes Dataset, 2014/15