

## Population health snapshot

### DEMOGRAPHICS



0–14 years  
**431**

# 3,000

people living in this area



65 years +  
**34%**

15–64 years  
**1,555**

65 years +  
**1,014**

16 people identify as Aboriginal and Torres Strait Islander

### FACTORS WHICH IMPACT ON HEALTH



## 91.8%

dwellings with at least one  
motor vehicle



## 75.1%

dwellings with internet  
connection



## 3.0%

unemployment rate



## 12.9%

dwellings have an income  
less than \$400 per week

### ACCESS TO SERVICES



## 73.8

General Practitioners  
(SA3 Surf Coast – Bellarine Peninsula)



## 1

General Practice



## 0

Public Hospitals\*



## 0

Private Hospitals

0 Bush Nursing Hospitals | 1 Independent Community Health Service | 0 Bush Nursing Centres  
0 Aboriginal Community-Controlled Health Organisations (ACCHOs)

\*Public hospitals are counted as the number of hospital locations with acute beds  
SA3: Statistical Area 3 (Western Victoria PHN is divided into nine SA3s)

### HOSPITALISATIONS

## 41

Potentially preventable  
hospitalisations per 1,000  
people (age standardised)

## 18

Potentially preventable  
hospitalisations for chronic  
conditions per 1,000 people  
(age standardised)

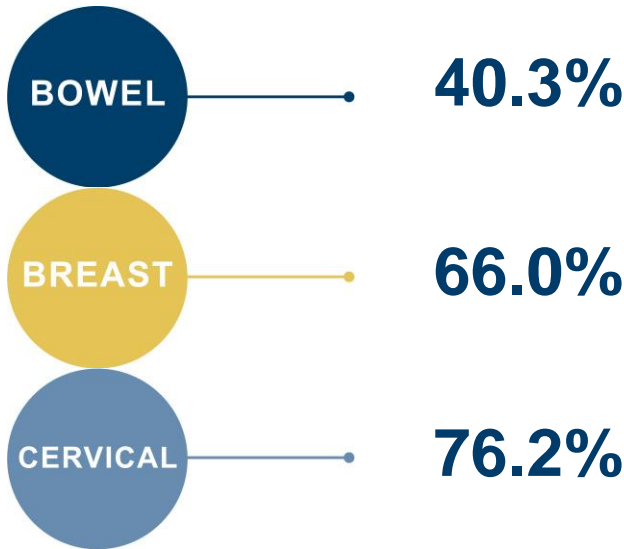
## 200

Emergency department  
presentations  
per 1,000 people

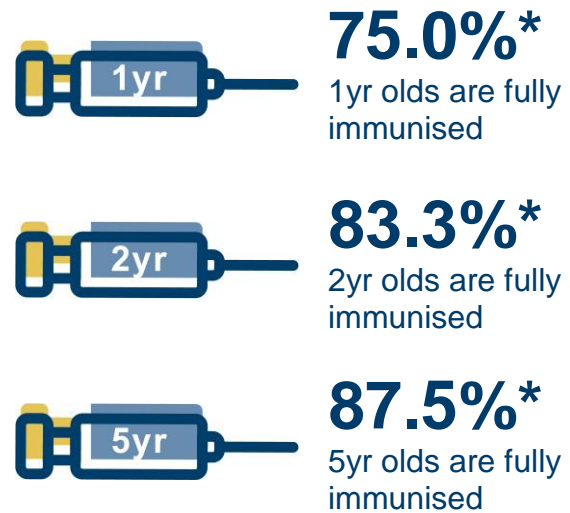
## 307

Hospital separations  
per 1,000 people

### CANCER SCREENING RATES



### IMMUNISATIONS



### HEALTH RISK FACTORS 18 YEARS AND OVER



**16.6%**  
current smokers



**11.2%\***  
complying with fruit and vegetable consumption guidelines



**78.3%**  
met 1999 National physical activity guidelines for adults



**34.0%**  
are overweight



**9.1%**  
are obese

\*Estimate has a relative standard error of between 25 and 50 per cent and should be interpreted with caution

### MENTAL HEALTH



**10.9**

18yrs and over with high or very high psychological distress per 100 people (age standardised)



**23.6**

percent of people with a lifetime prevalence of depression and anxiety



**0.0**

deaths from suicide and self-inflicted injuries per 100,000 people (age standardised)

### CHRONIC DISEASE



**3.1%**

of persons 18 years and over with type 2 diabetes



**15.3%**

circulatory system disease (age standardised)

### SOURCES

ABS Census, 2011 | Aust. Government Department of Employment, 2015 | AIHW, 2014 | Service Mapping from multiple sources e.g. Department of Health, National Health Services Directory, & VACCHO | Compiled by PHIDU based on modelled estimates from 2011-13 Australian Health Survey, ABS (unpublished); & the average of ABS Estimated Resident Population, 30 June 2011 & 30 June 2012, based on Aust. standard | Compiled by PHIDU from deaths data based on 2009-13 Cause of Death Unit Record Files supplied by Aust. Coordinating Registry and Victorian Department of Justice, on behalf of Registries of Births, Deaths & Marriages & National Coronal Information System. The population at the small area level (Statistical Area Level 2) is ABS Estimated Resident Population (ERP), 30 June 2009 to 30 June 2013; population standard is ABS ERP for Aust., 30 June 2009 to 30 June 2013 | Compiled by PHIDU based on data from: 1) BreastScreen NSW, BreastScreen Vic, BreastScreen Qld, BreastScreen SA, BreastScreen WA 2010 & 2011; & BreastScreen ACT 2007 & 2008; & 2) average of ABS ERP, 30 June 2010 & 30 June 2011 (NSW, Vic, Qld, SA & WA); 30 June 2007 & 30 June 2008 (ACT) | Victorian Cervical Cytology Registry Statistical Report, 2014 | Aust. Government Department of Health. ACIR. Jan-March 2016 | Victorian Population Health Survey, 2011-12 | Victorian Population Health Survey, 2011-12. Analysis based on 2003 fruit & vegetable consumption guidelines which have since changed | Victorian Health Information Surveillance System Ambulatory Care Sensitive Conditions reports, 2013-14. Data unavailable for Horsham | Polar Explorer - Victorian Admitted Episodes Dataset, 2014/15